

MMX-2003-12NDS

Intelligent Network Fire Alarm Control Unit



Description

Secutron's MMX-2003-12NDS Network Fire Alarm Control Unit offers modular components to meet a wide variety of applications. Designed for peer-to-peer network communications, the MMX-2003-12NDS allows for a maximum of 63 nodes, while providing reliability, flexibility and expandability.

The MMX-2003-12NDS base unit consists of one intelligent signaling line circuit (SLC) capable of supporting 99 analog sensors and 99 addressable modules. In addition the base unit includes Four Style Z/Y (Class A/B) Notification Appliance Circuits rated at 1.7 Amps each and a large 4 x 20 back-lit alphanumeric LCD display.

The network configuration allows the MMX-2003-12NDS control unit to be connected to a Secutron network to provide additional input circuits, visual zones, programmable notification appliance circuits, and relays. The network interface module allows the control units to communicate on a peer-to-peer network via a Proprietary Arcnet Network Communications protocol.

The network capabilities allow site specific customization and the ability to meet local and national requirements.

Features

Fire Alarm Control

- One expandable to nine Intelligent Signaling Line Circuits (SLC)
- Modular design
- Each SLC Loop is capable of supporting 99 Analog Sensors and 99 Addressable Modules which can be wired in Style 6 or 7 (Class A) or Style 4 (Class B)
- Four Style Z/Y (Class A/B) Notification Appliance Circuits rated at 1.7 Amps each
- Large 4 by 20 character Back-lit LCD Display with user friendly menu
- Supported languages: English, French, Arabic* and Hebrew* (*960 character back-lit LCD display only)
- Correlatable Switch Inputs which allow for multi-functional outputs
- Four Status Queues with selector switches and LEDs for Alarm, Supervisory, Trouble and Monitor
- Auxiliary relay contacts for Common Alarm, Common Supervisory and Common Trouble
- Group bypass with built-in false alarm prevention technology
- RS-232 output for remote system printer or CRT
- Two Event History Logs comprised of a 6000 event alarm history log for alarm related events and a 6000 event log for all events
- Supports three configuration files (current, previous and next configuration) with "hot swap" support
- Supports Conventional Hardwire Adder Modules
- Built-in One Man Walk Test operation
- Configurable for Canadian Two Stage operation
- Configurable for Coded Operation
- Capability to adjust Intelligent Smoke Detector sensitivity levels
- Real time 3D graphical monitoring and control using Open Graphic Navigator™
- BACnet support
- Supports Boolean logic functions
- Built-in Ethernet port
- Remote diagnostics via a built-in web server
- UL listed for Smoke Control

Network Features

- Up to 63 nodes
- Peer-to-peer network communications
- Style 4 (Class B) or Style 6 or 7 (Class A) wiring configuration
- Proprietary Arcnet Network Communications protocol
- Supports copper and/or fiber optic network cable



S6619



S6619



7165-1656:0132

NYC
Fire Dept.



APPROVED

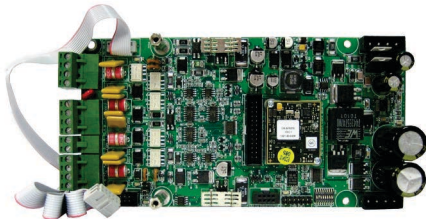
MMX-2003-12NDS Network Series Fire Alarm Control Units



MMX-2003-12NDS Compact Network Main Control Unit

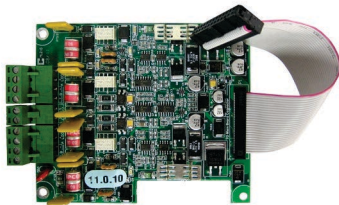
The MMX-2003-12NDS Compact Network Main Control Unit complete with one Intelligent Signaling Line Circuit (Style 4, 6 or 7), Four Style Z/Y (Class A/B) Notification Appliance Circuits rated at 1.7 Amps each, a 4 line by 20 character back-lit LCD display and a 12 Amp Power Supply. The MMX-2003-12NDS provides space for the FNC-2000 Network Controller Module, two internal adder modules and two programmable modules.

Adder Loop Controller Modules



ALCN-792M Quad Loop Controller Module

The ALCN-792M Quad Loop Controller Module provides two Signaling Line Circuits (SLC) to the MMX system consisting of 99 Analog Sensors and 99 Addressable Modules per loop. The ALCN-792M can be expanded with the use of the ALCN-792D Daughter Board Module. The ALCN-792M occupies one module slot.

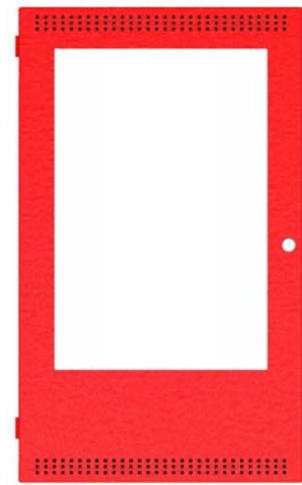


ALCN-792D Daughter board for Quad Loop Controller Module

The ALCN-792D Daughter Board provides an additional two SLC when connected to the ALCN-792M Quad Loop Controller Module. The daughter board mounts on top of the ALCN-792M.



UB-1024DS



DOX-1024DSR

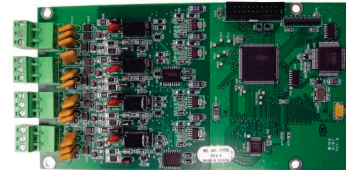
UB-1024DS Universal Backbox

The UB-1024DS Universal backbox houses the MMX-2003-12NDS and provides space to mount up to 17 AH batteries. A DOX-1024DSR door is ordered separately. **Dimensions** (minus built-in trim ring): 26"H x 14.5"W x 4.2"D

DOX-1024DSR Door

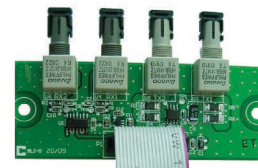
The DOX-1024DSR mounts on the UB-1024DS backbox. The door features the universal CAT-30 lock and is available in a red finish.

Fire Network Controller Modules



FNC-2000 Fire Network Controller Module

The FNC-2000 provides network capability to the MMX-2003-12NDS. One Fire Network Controller Module is required per network node. In addition the FNC-2000 provides an interface for adding an optional FOM-2000-SP Fiber Optic Network Adder Module. The FNC-2000 mounts in the MMX-2003-12NDS main chassis.



FOM-2000-SP Fiber Optic Network Adder Module

The FOM-2000-SP Fiber Optic Network Adder Module allows for the use of fiber optic cabling on the MMX Series units. It seamlessly connects to the interface on the FNC-2000 Fire Alarm Network Controller Module.

Electrical Specifications

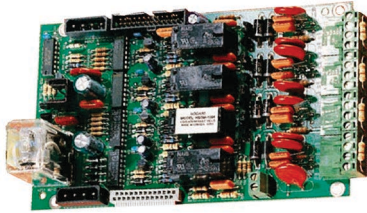
| | |
|-----------------------------|--|
| Primary Input Power | 120V 60Hz / 240V, 50Hz 4 Amps / 2 Amp (primary) |
| Power Supply Ratings | 12 Amps. max. (secondary) |
| For NAC Circuits | 24VDC unfiltered, 10 Amps. max. |
| Battery Type | 24VDC, Gel-Cell/Sealed Lead-Acid |
| Battery Charging Capability | 17-65 AH batteries |

Adder Hardware Modules



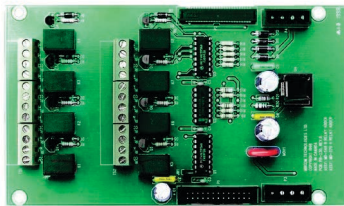
DM-1008A Eight Initiating Circuit Module

The DM-1008A provides 8 Style B (Class B) or 4 Style D (Class A) Initiating Circuits configurable for Alarm, Supervisory or Trouble zones. The DM-1008A occupies one module slot in the MMX-2003-12NDS main chassis.



SGM-1004A Four Notification Appliance Circuit Module

The SGM-1004A provides 4 Style Z/Y (Class A/B) Notification Appliance Circuits configurable as Silenceable or Non-Silenceable. Each NAC circuit is rated at 1.7 Amps. The SGM-1004A occupies one module slot in the MMX-2003-12NDS main chassis.



RM-1008A Eight Relay Circuit Module

The RM-1008A provides the MMX-2003-12NDS with eight individual configurable relays per module. Each relay provides one Form C contact rated at 28 VDC @ 1 Amp (resistive load) as well as a Green LED to indicate that the relay is active. The RM-1008A occupies one module slot in the MMX-2003-12NDS main chassis.

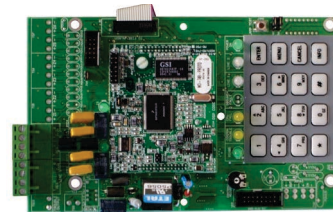
Graphics Software



Open Graphic Navigator (OpenGN)

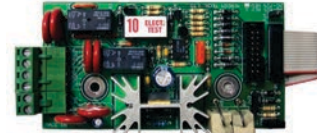
The Open Graphic Navigator (OpenGN) software is an advanced fire alarm management and warning system that provides building ready monitoring, control and software management solutions that allows a user to monitor remote sites from multiple operator workstations located anywhere in the world. The OpenGN software is available in two versions: Network (OPENGN-ENT) and Non-Network (OPENGN-MINI).

Adder Auxiliary Modules



UDACT-300A Digital Alarm Communicator Module

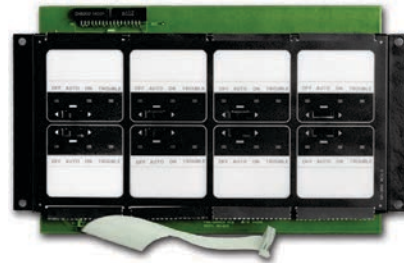
The UDACT-300A Digital Alarm Communicator Module allows the MMX-2003-12NDS to transmit addressable point information to a central station. The UDACT-300A occupies one module slot in the MMX-2003-12NDS main chassis.



PR-300 Polarity Reversal/City Tie Module

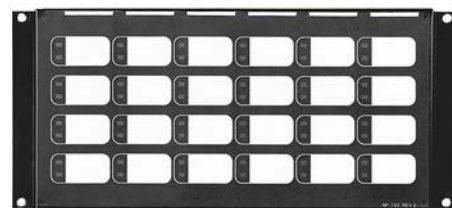
The PR-300 Polarity Reversal/City Tie Module provides the system with a supervised City Tie (24 VDC/200 mA max.) and Polarity Reversal connection (24 VDC (open circuit), 8 mA max. (shorted)). The PR-300 occupies one module slot in the MMX-2003-12NDS main chassis.

Programmable Modules



FDX-008 Fan Damper Control Module

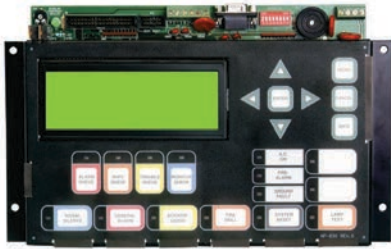
The FDX-008 Fan Damper Control Module provides individually programmed circuits which can be used for fan or damper control. The FDX-008 connects to the main control unit or the RAXN-LCD and occupies one display position in the MMX-BB-1000 or BB-5000 Series enclosures.



IPS-2424DS Programmable Input Switches Module

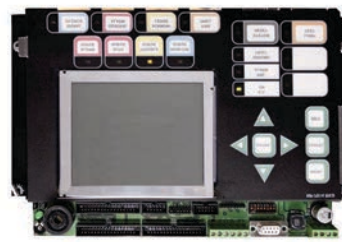
The IPS-2424DS provides 24 programmable switches that can be configured for ancillary functions such as zone bypass or added common control functions. The IPS-2424DS connects to main control unit or the RAXN-LCD when mounted remotely. The IPS-2424DS occupies one display position in the MMX-BB-1000 or BB-5000 Series enclosures.

Remote LCD Annunciators



RAXN-LCD Remote LCD Annunciator

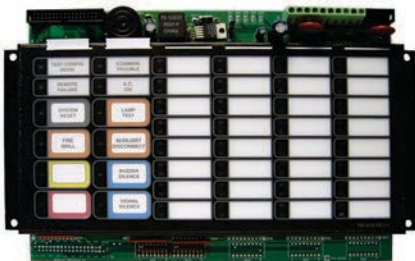
The RAXN-LCD Remote LCD Annunciator is equipped with a 4 line x 20 character back-lit LCD display that provides the same functions as the main display on the fire alarm control unit. The RAXN-LCD occupies one display position in the MMX-BB-1000 or BB-5000 Series enclosures.



RAXN-LCDG Remote Graphic LCD Annunciator

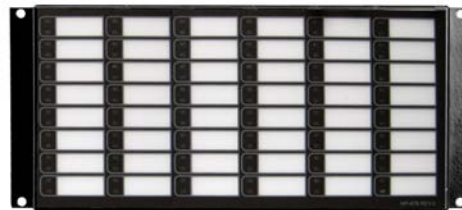
The RAXN-LCDG Remote Graphic LCD Annunciator is equipped with a 24 line x 40 character back-lit graphical LCD display that is used to display 9 events per page. Each event is displayed over 2 lines with 40 characters per line allowing emergency information to be displayed in an easy to read format. The RAXN-LCDG occupies one display position in the MMX-BB-1000 or BB-5000 Series enclosures.

Remote LED Annunciators



RAM-1032TZDS Main Remote LED Annunciator

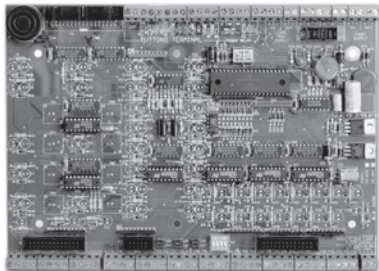
The RAM-1032TZDS Main Remote LED Annunciator provides common annunciator functions and 32 points of LED annunciation. The RAM-1032TZDS has indicators for A.C. On, Common Trouble and Signal Silence and controls for System Reset, Lamp Test, Fire Drill, Buzzer Silence and Signal Silence. The RAM-1032TZDS occupies one display position in the MMX-BB-1000 or BB-5000 Series enclosures.



RAX-1048TZDS Programmable LED Annunciator Module

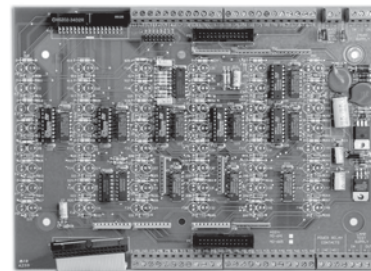
The RAX-1048TZDS Programmable LED Annunciator Module provides 48 programmable bi-colored LEDs. The RAX-1048TZDS connects to the main control unit or either the RAXN-LCD or RAM-1032TZDS when mounted remotely. The RAX-1048TZDS occupies one display position in the MMX-BB-1000 or BB-5000 Series enclosures.

Graphic Annunciator Driver Modules



MGD-32 Master Graphic Driver Module

The MGD-32 Master Graphic Driver Module provides common control inputs for the common control switches such as System Reset, Signal Silence, Auxiliary Disconnect, Fire Drill, Lamp Test, Acknowledge and General Alarm. The MGD-32 can also drive up to 32 supervised outputs. These output points are capable of driving LEDs or incandescent lamps. The MGD-32 mounts in a graphic annunciator wallbox or in the BB-5000 enclosures. An external power supply is required for incandescent lamps and lamp test.



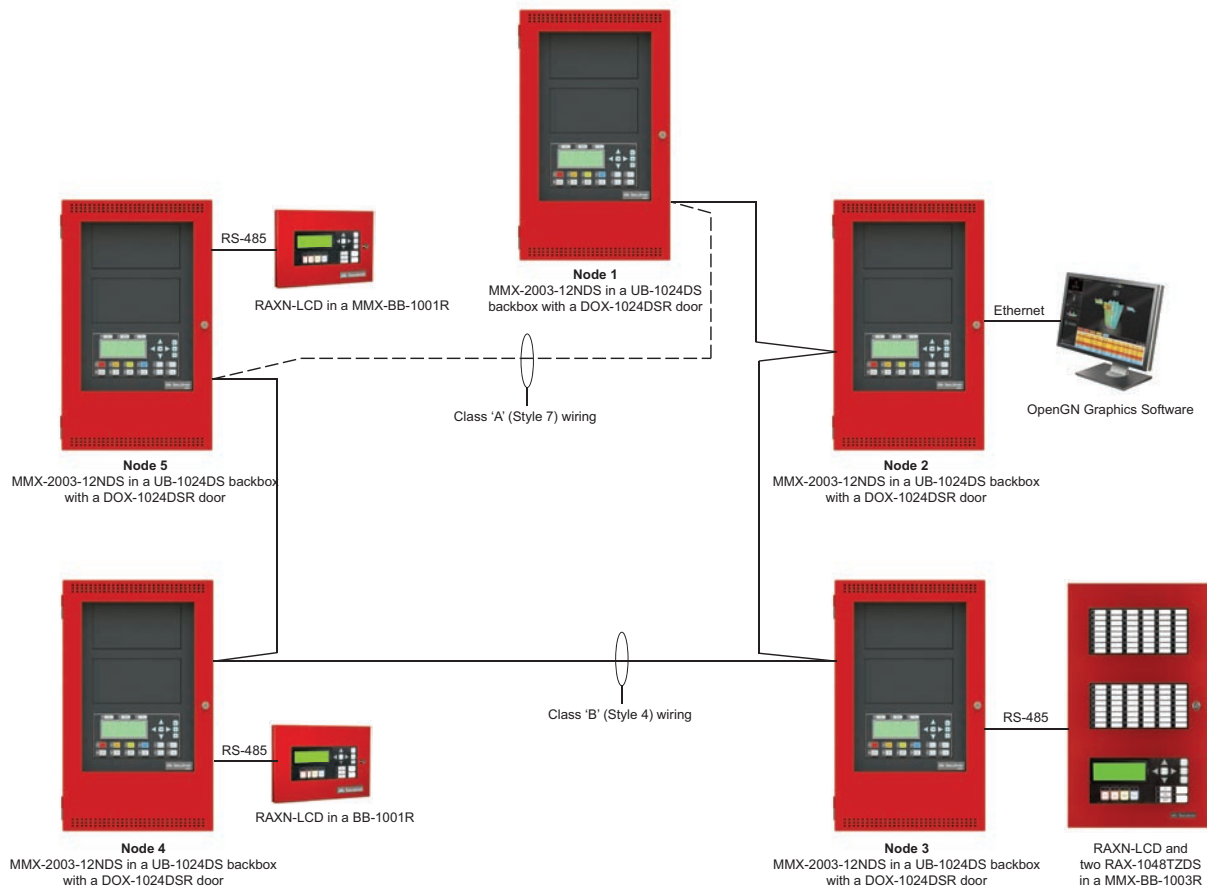
AGD-048 Adder Graphic Driver Module

The AGD-048 Adder Graphic Driver Module can be used with the MGD-32 to support an additional 48 supervised outputs. The AGD-048 mounts in a graphic annunciator wallbox or in a BB-5000 Series enclosure.

Dimensions for Annunciator Module Enclosures

| Model | Dimensions |
|--------------|--------------------------|
| MMX-BB-1001R | 9"H x 12.75"W x 1.2"D |
| MMX-BB-1002R | 18"H x 12.75"W x 1.2"D |
| MMX-BB-1003R | 26.4"H x 12.75"W x 1.2"D |
| MMX-BB-1008R | 33"H x 22.5"W x 1.25"D |
| MMX-BB-1012R | 45"H x 22.5"W x 1.25"D |

Typical MMX-2003-12NDS Networked System Configuration



Current Consumption

| Model Number | Description | Standby | Alarm |
|--------------------------|---|---------|---|
| MMX-2003-12NDS | Main Chassis (12 Amp) | 0.310 | 0.733 |
| ALCN-792M | Dual Analog Loops | 0.130 | 0.145 |
| ALCN-792M with ALCN-792D | Quad Analog Loops | 0.130 | 0.145 |
| FNC-2000 | Fire Network Controller Module | 0.190 | 0.0190 |
| FOM-2000-SP | Fiber Optics Module | 0.015 | 0.015 |
| DM-1008A | 8 Initiating Circuit Module | 0.080 | 1 zone active: 0.125 2 zone active: 0.170 4 zone active: 0.275 6 zone active: 0.370 8 zone active: 0.465 |
| SGM-1004A | 4 Notification Appliance Circuit Module | 0.060 | 0.258 |
| RM-1008A | 8 Relay Circuit Module | 0.025 | 0.150 |
| FDX-008 | Fan Damper Control Module | 0.015 | 0.035 |
| UDACT-300A | Dialer Module | 0.045 | 0.120 |
| PR-300 | City Tie Module | 0.035 | 0.300 |
| RAX-1048TZDS | Adder Annunciator Chassis | 0.022 | 1 zone active: 0.026 2 zone active: 0.030 3 zone active: 0.035 4 zone active: 0.039 48 zone active: 0.262 |
| RAM-1032TZDS | Adder Annunciator Chassis | 0.050 | 32 zone active: 0.300 |
| AGD-048 | Adder Graphic Driver Board | 0.035 | # of LEDs x 4mA |
| IPS-2424DS | Programmable Input Switches Module | 0.010 | 0.015 |

Ordering Information

| Model | Description |
|--|--|
| Network Fire Alarm Control Unit | |
| MMX-2003-12NDS | Network Main Chassis with 12 Amp power supply. Mounts in the UB-1024DS backbox. |
| UB-1024DS | Universal black backbox. Requires DOX-1024DSR door. |
| DOX-1024DSR | Red door for UB-1024DS backbox |
| Network Controller Modules | |
| FNC-2000 | Fire Network Controller Module |
| FOM-2000-SP | Fiber Optic Network Adder Module |
| Adder Loop Controller Modules | |
| ALCN-792M | Network Quad Loop Controller Module |
| ALCN-792D | Daughter board for ALC-792M Quad Loop Controller Module |
| Adder Hardwire Modules | |
| DM-1008A | Eight Class B (Style B) or 4 Class A (Style D) Initiating Circuit Module |
| SGM-1004A | Four Class A/B (Style Z/Y) Notification Appliance Circuit Module (Rated at 1.7 Amps per circuit) |
| RM-1008A | Eight Relay Circuit Module c/w eight form C relays (Rated for 28 VDC @ 1 Amp max. per relay) |
| Adder Auxiliary Modules | |
| UDACT-300A | Digital Alarm Communicator Transmitter/Dialer Module |
| PR-300 | Polarity Reversal and City Tie Module |
| Remote Annunciators | |
| RAXN-LCD | Remote LCD Annunciator |
| RAXN-LCDG | Remote Graphic LCD Annunciator |
| RAM-1032TZDS | Main Remote LED Annunciator c/w 32 Bi-Colored LEDs |
| RAX-1048TZDS | Programmable LED Annunciator Module c/w 48 Bi-Coloured LEDs and 48 Trouble LEDs |
| Programmable Modules | |
| IPS-2424DS | Programmable Input Switches Module c/w 24 selector switches and 24 bi-coloured LEDs |
| FDX-008 | Fan Damper Control Module |
| Enclosures for Remote Annunciators / Programmable Modules | |
| MMX-BB-1001R | Remote Enclosure. Houses one module. |
| MMX-BB-1002R | Remote Enclosure. Houses two modules. |
| MMX-BB-1003R | Remote Enclosure. Houses three modules. |
| MMX-BB-1008R | Remote Enclosure. Houses eight modules. |
| MMX-BB-1012R | Remote Enclosure. Houses twelve modules. |
| Graphic Driver Modules | |
| MGD-32 | Main Graphic Driver Module c/w 32 Supervised Outputs |
| AGD-048 | Adder Graphic Driver Module c/w 48 Supervised Outputs |
| Graphics Software | |
| OPENGN-MINI | Open Graphic Navigator Software, Mini Edition for standalone MMX Systems |
| OPENGN-ENT | Open Graphic Navigator Software, Enterprise Edition for MMX Network Systems |

